

Stroke Blending

by Gayle Oram MDA

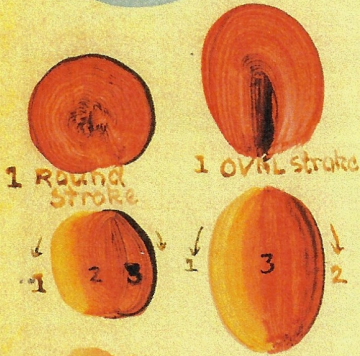
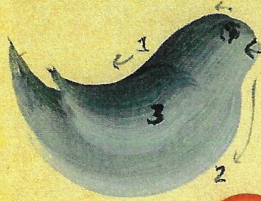
In the Stroke category, the judges will need to see that all elements have been stroked. We look for graceful, correctly shaped strokes, rather than heavy and overworked ones. Large elements require more than one stroke and must consist of correct value changes to form the shape. The strokes should gracefully illustrate the shape, conformation, and flow through the object and design. Paint consistency, condition of the palette, and value and stroke control are each important factors in achieving the desired result.

The larger the object, the more strokes might be needed. It's possible that a larger brush might be necessary, since each brush creates a different look. If a round brush is used, more strokes and values will be necessary, each being loaded so that there is an even gradation of values to produce the desired shape. A larger flat or filbert brush might need to be double- or triple-loaded to produce the gradation of values.

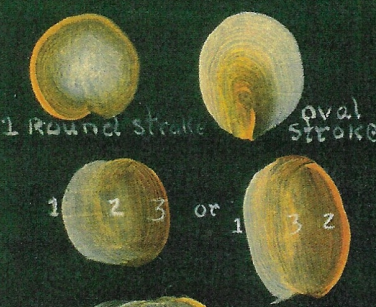
Dark backgrounds might need to be painted a second time if the coverage is inadequate. To keep the appearance fresh, use the same colors, values, and strokes as you did in the initial layer. This will allow the object to look as though it was only painted once. To prevent the piece from looking overworked, it might be helpful to apply a thin, even coat of extender medium over the object before repainting.

Heavy, opaque containers, flowers, birds, etc., are not compatible with graceful, semitransparent strokes that can be created with one continuous motion of the brush.

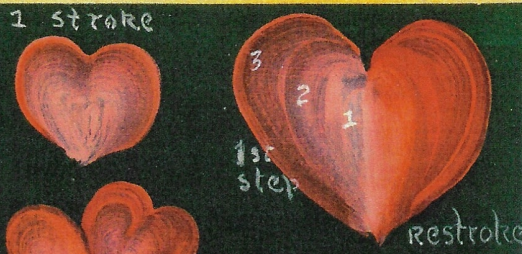
For more information regarding the Certification critique process, watch the Certification Committee's online videos at www.decorativepainters.org/certification.php and click on Judging Process.



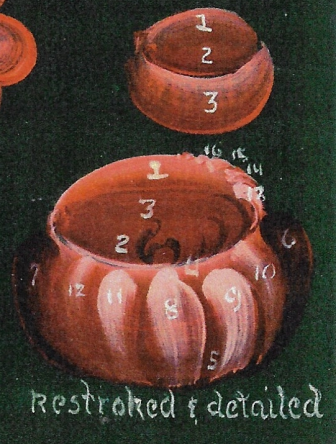
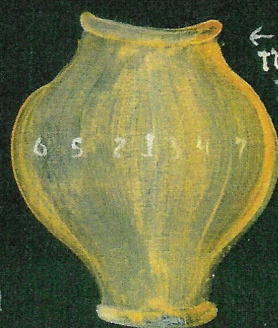
1. Light stroke
2-3. side load into medium
4-5. wipe brush, load medium side load into darker.



start in the middle work to the edges, or start at the outside to the middle



this side restroked



Restroked & detailed